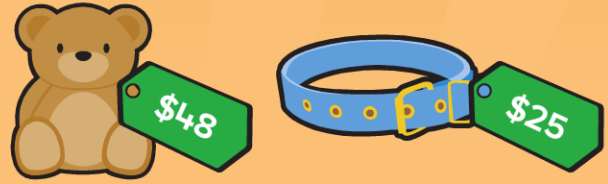


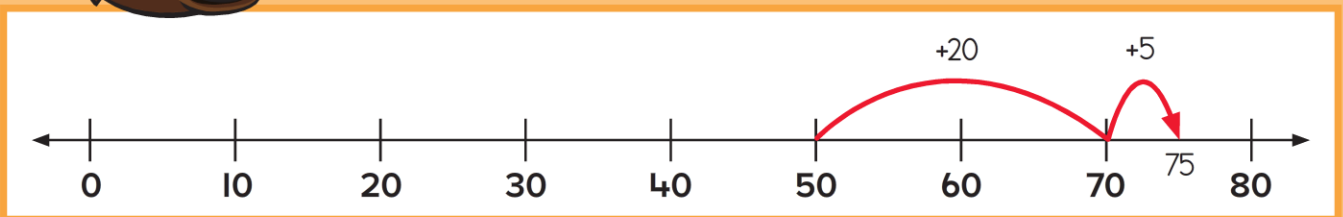
## 9.2 Estimating Answers (Adding within 100)

Imagine you had \$80. Could you buy both items? How do you know?

How could you estimate the total cost?



\$48 is close to \$50 so I just think \$50 + \$25.



What is another way you could estimate the total cost?

You could add the digits in the tens place. If it's close to \$80, you then add the digits in the ones place.



Which strategy do you prefer? Why?

How could you estimate the total cost of these two items?



### Step Up

I. Write a number sentence to show how you could estimate the total cost.

a.

see

$$\$38 + \$26$$

think

$$\$40 + \$26$$

b.

see

$$\$45 + \$19$$

think

$$\$ \underline{\quad} + \$ \underline{\quad}$$

**2. Estimate** the cost of each purchase.  
Then write an addition sentence to show your thinking.

**a.**

Blocks and Play house is about \$ \_\_\_\_\_

\_\_\_\_\_

Sports car and Tea set is about \$ \_\_\_\_\_

\_\_\_\_\_

Toy Mania	
Blocks	\$35
Play house	\$39
Tea set	\$18
Sports car	\$25

**b.**

Bowl and Toy is about \$ \_\_\_\_\_

\_\_\_\_\_

Bed and Collar is about \$ \_\_\_\_\_

\_\_\_\_\_

Puppy Palace	
Bed	\$45
Toy	\$18
Bowl	\$12
Collar	\$29

**3.** Imagine you had the amount in the wallet.  
Color a  to show if you could buy both games.



\$55

yes
  no



BIKES



BOATS

**Step Ahead**

Imagine you have \$60 and buy two toys. Loop the two toys that would give you the least amount of change.



\$35



\$18



\$28